

# ATTAN



# MANHATTAN







# NEW YORK CITY

## MAJOR POINTS OF INTEREST IN MANHATTAN

### **American Museum of Natural History**

*(All significant artifacts from this site were transferred to Mother Planet - March 2003)*

**Battered Park** *(site of Battery Park before the arrival of the Alliance - August 2002)*

### **Broadway**

### **Brooklyn Bridge**

**Central Park** *(site of 1st Annual Human Survival Games)*

### **Chinatown**

**Ellis Island** *(Established as a Resort Area for the Alliance - July 2003)*

### **Empire State Building**

**Governor's Island** *(Maximum Security Prison for Human Violators)*

**Lincoln Center** *(former site of primitive ritual activities)*

### **Manhattan Bridge**

### **Metropolitan Museum of Art**

**Museum of Modern Art** *(site of the Cultural Cleansing - December 2002)*

**Orb Monument** *dedicated to the conquest of New York City - November 25, 2002)*

### **Statue of Liberty**

**Times Square** *(site of the New Year's celebration)*

**United Nations Headquarters** *(destroyed in the Great Fire--Orb Invasion - August 2002)*



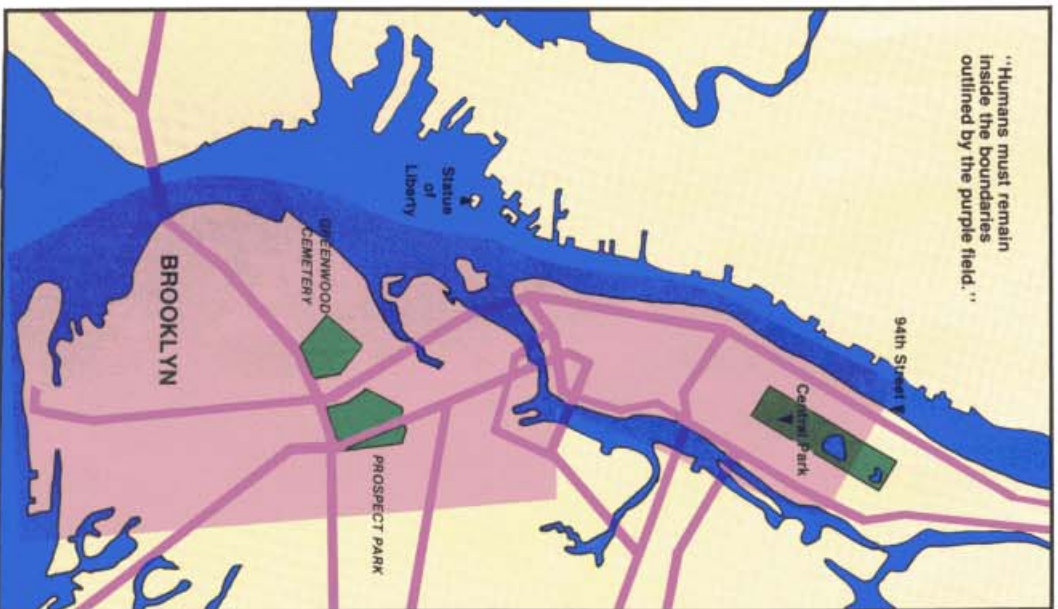




# OFFICIAL MANHUNTER FIELD MAP

By permission of the Orb Alliance

"Humans must remain  
inside the boundaries  
outlined by the purple field."



© 1988 Sierra On-Line, Inc.



## CENTRAL PARK

THE  
LAST STAND  
OF THE  
HUMAN  
RESISTANCE  
MOVEMENT  
(Human Massacre)  
October 31, 2002



## CONY ISLAND







**PROSPECT PARK**

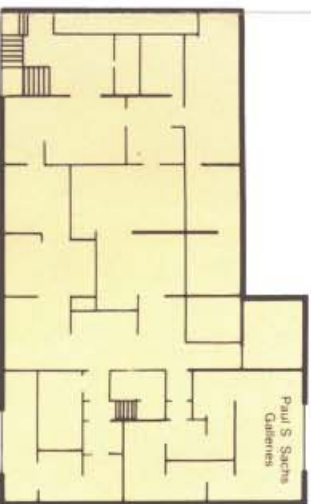


**GREENWOOD CEMETERY**

Handwritten marks: a large 'X' and the letters 'E' and 'T'.

Handwritten text: '1001' and '1111'.

# Museum of Modern Art ('MOMA')

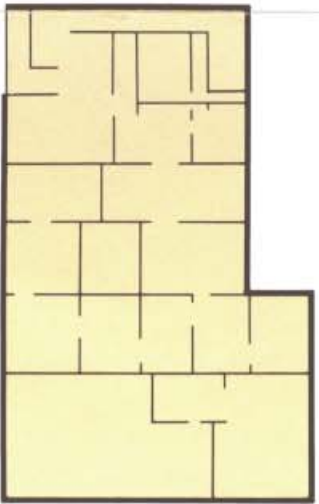


THIRD FLOOR

SIXTH FLOOR  
(not shown)  
Penthouse Restaurant  
(open noon-3 p.m.)

## THIRD FLOOR

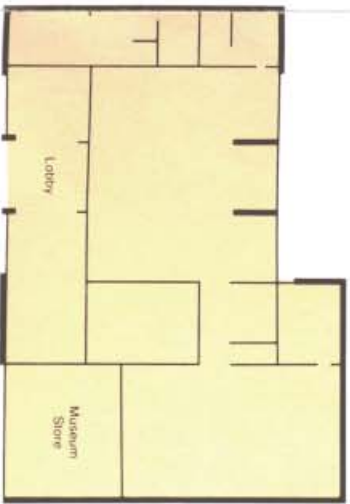
1. Picasso after 1930
2. Dadaism
3. Surrealism
4. Surrealism and related schools
5. Post-war European art
6. Abstract Expressionism
7. Abstract Expressionism
8. American and European art of the 1950s
9. American art of the 1950s
- Paul S. Sachs Galleries (drawings and prints)
- Edward Steichen Galleries (photography)



SECOND FLOOR

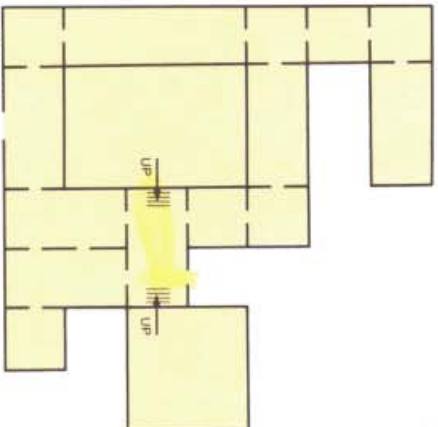
## SECOND FLOOR

1. Post-impressionism
2. Fantastic art of the end of the 19th: early Expressionism
3. Analytic Cubism
4. Synthetic Cubism
5. Cubism, Fantastic Cubism
7. The Fauves, Expressionism
10. Futurism
11. Matisse
12. De Stijl, Constructivism, Suprematism
13. "Blauer Reiter." Orphism
14. Ecole de Paris
- G. Philip L. Goodwin Gallery (architect and design)

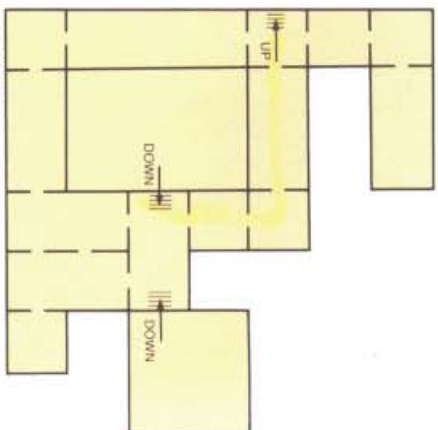


FIRST FLOOR

AUDITORIUM LEVEL  
(not shown)  
Film and video shows

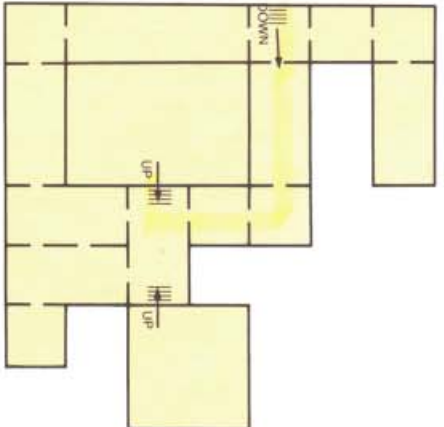


FIRST FLOOR

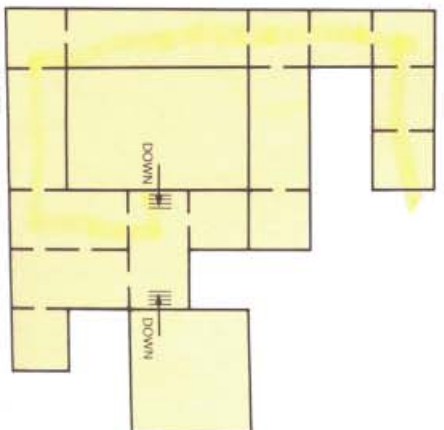


SECOND FLOOR

# American Museum of Natural History



THIRD FLOOR



FOURTH FLOOR